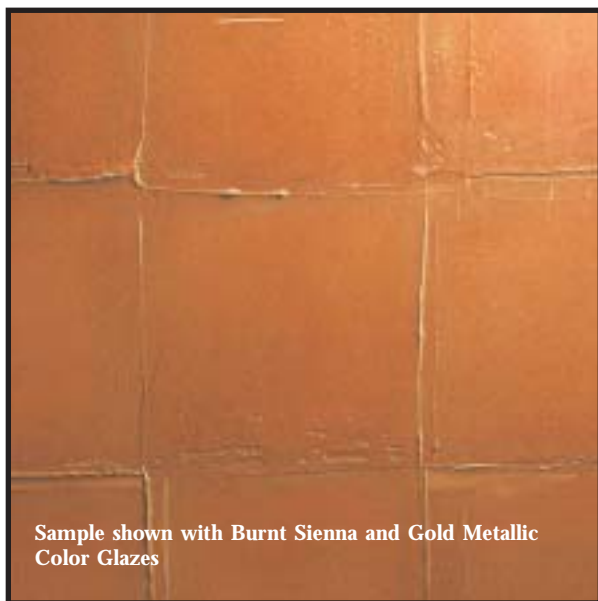




Sculpture Stone Faux Tile



Sculpture Stone is available in Smooth or Coarse texture allowing a wide variety of dimensional finishes. Try one of the techniques discussed or experiment with various tools, stamps or stencils to create your own custom finish. Paint or glaze over Sculpture Stone to mimic the look of aged plaster.

MATERIALS CHECKLIST



1) McCloskey® Special Effects® Sculpture Stone Smooth



2) McCloskey® Special Effects® Translucent Color or Metallic Glaze in desired color



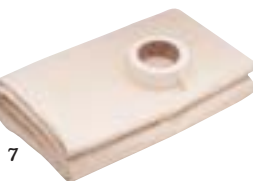
3) Symphony™ Color Washing Brush



4) Paint Roller with ½" Roller Cover or ⅜" Nap Roller Cover & Paint Tray



5) Spackling Knife



6) Symphony™ Cheesecloth

7) Painter's Tape & Drop Cloth

8) Practice Board



1. Using a 1/2" nap roller cover, apply a heavy coat of Sculpture Stone Smooth. Work in an area about 3' x 3' maintaining straight edges. Do not let the texture dry.
2. Beginning in one corner, place the spackling knife, rounded side down, onto the wet Sculpture Stone. Holding the knife at a 60° angle and using moderate pressure, pull the knife sideways or down. The length of the pull should match the width of the knife (to make a square tile). This action will smooth the plaster in the center of the tile and create a raised edge of texture on the edges of each tile. Repeat in the space adjacent to your first "tile" but draw the knife in the opposite direction of your first tile (like a

basket weave pattern). This action will remove some of the texture, so keep the knife clean by removing excess Sculpture Stone as you work.

TIP: Avoid dried "bits" of Sculpture Stone on your knife, as these will streak your "tiles".

3. Repeat this process, connecting the squares as you proceed across the entire surface. This technique does not require perfectly square "tiles". Let dry thoroughly, usually overnight.
4. Follow "Glazing Technique Steps" to finish your look.

Sculpture Stone Glazing Techniques



Your sculptured finish now needs a coat of color to beautify and enhance the textured surface. Use Special Effects® Color, Opal, Pearl or Metallic Glazes to add depth and color.



1

Use a 3/8" nap roller and roll a thin coating of glaze over an area about 3' x 3' being certain to force glaze into depressions of the textured surface. The Sculpture Stone is porous and will soak up much of the glaze, causing the glaze to dry quickly, so working with a partner is recommended. With one partner rolling the glaze on, and the second partner removing excess glaze and softening the glaze as outlined in step 2 will ensure successful results. DO NOT let the glaze dry before moving to next step.



2

Use a Symphony™ Cheesecloth, Softening Brush or a cotton rag to gently rub the surface to remove some of the glaze and further highlight the texture. Remove as much (or little) of the glaze as you choose. This step should also eliminate any roller marks left from rolling the glaze onto the surface. If you remove too much glaze in some areas simply re-roll glaze onto the area and soften again. Allow the glaze to dry for 48 hours.



3

OPTIONAL STEP:

To further enhance your finish, you may elect to use two or more glaze colors creating a more complex and alluring finish. Roll-on the first glaze color following Step 1. While the glaze is very wet, use a Symphony™ Color Washing Brush to add a second (or more) glaze working the glazes together in a "wet on wet" fashion. These additional colors are "accents" and should be used sparingly. BEFORE the glaze dries you may elect to further soften these colors following Step 2, again removing as much (or little) wet glaze as you desire.

DECORATIVE OPTION:

Special Effects® Translucent Color Glazes are the perfect color finish for Sculpture Stone, but do not overlook the beauty and drama that can be created by using Metallic, Opal and Pearl Glazes with Sculpture Stone. The porous nature of Sculpture Stone, will diminish the metallic effects of these iridescent glazes and create soft, lustrous finishes.